



Hansagreen
LED

BOLLAX CON

BLXC-BLD-20W-XXXXK

*Dark Sky
Logo*



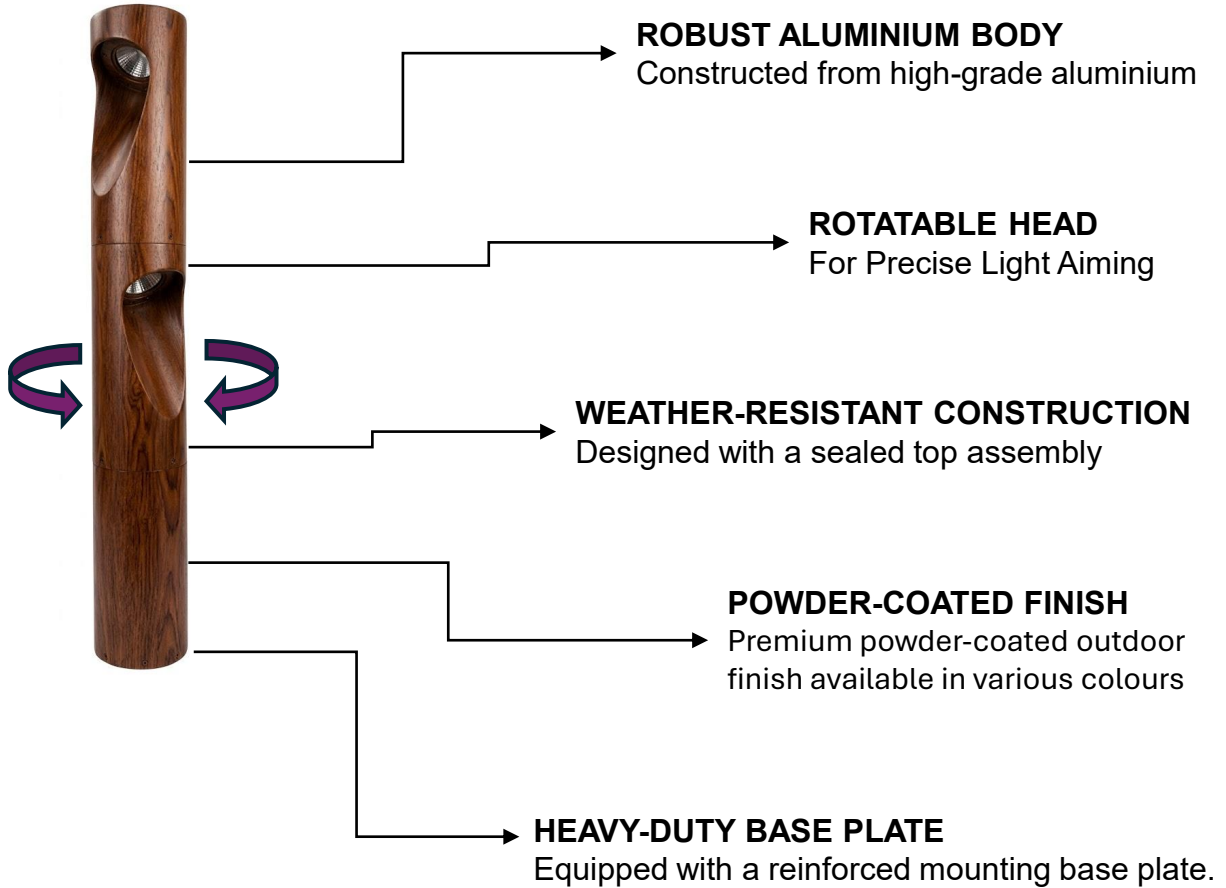
+971 65 260 706

| sales-me@hansagreen.com

| www.hansagreen.com



PRODUCT HIGHLIGHTS



FEATURES



Thermal Management



Corrosion Resistance



Vibration Resistance



Easy Maintenance



DESCRIPTION

BOLLAX CON is a durable outdoor LED lighting solution engineered to perform reliably in demanding environmental conditions. With its weather-resistant construction and sleek, modern design, it seamlessly combines strength with aesthetic appeal. Ideal for pathways, landscapes, and outdoor environments.

Conformity



مجلس أبوظبي
للجودة والمطابقة
Abu Dhabi Quality &
Conformity Council



Compliant with



Tested for Safety



Salt
Spray



3G
Vibration



Photobiological
Safety

Insulation Class



Protection Class





ORDERING CODE

BLXC-BLD-20W-XXXXK-xx-xx-xxx-xx

PRODUCT NAME	CATEGORY	PRODUCT FAMILY	POWER	CCT	CONFIG	BODY COLOUR	CONTROL OPTIONS	DIMENSION
BLX	C	BLD	XXW	XXXXK	xx	xx	xxx	xx
BOLLAX	SHAPE	BOLLARD	UP TO 20W	2700K	SH (SINGLE HEAD)	GR (GREY)	10V (1-10V)	TH (1000 mm)
				3000K	DH (DOUBLE HEAD)	BL (BLACK)	DAL (DALI)	MH (650 mm)
						SP (SPECIAL)		CH (350 mm)

Example: For the bollard model Bollax Con with a power rating of 20W, CCT 2700K, black body colour, DALI dimmable controller, and a height of 1000 mm, the ordering code will be BLXC-BLD-20W-2700K-SH-BL-DAL-TH

TECHNICAL SPECIFICATION

LUMINAIRE DETAILS	
PRODUCT NAME	BOLLAX CON
PRODUCT TYPE	LED BOLLARD LIGHT
PRODUCT CODE	BLXC-BLD-20W-XXXXK
MAXIMUM HOUSING POWER	UP TO 20W

HOUSING DETAILS	
BODY MATERIAL	CORROSION-RESISTANT ALUMINIUM DIE-CAST
LENS	TEMPERED CLEAR GLASS
OPTICS	SYMMETRIC / ASYMMETRIC
BODY COLOUR	GREY / BLACK / SPECIAL

CHIP DETAILS	
LIGHT SOURCE	COB
AVAILABLE CCT	2700K - 3000K
MACADAM BINNING	STEP 4
CRI	≥90





TECHNICAL SPECIFICATION

OPTICAL DETAILS

BEAM ANGLE	56°
OPTICS	IES Type I (Very Short)
BUG RATING	B1-U0-G1
ULOR(Upward Light Output Ratio)	0% (U0 – Zero Uplight)

LUMINAIRE PERFORMANCE

LUMINAIRE FLUX	1,418 lm (@ 18.392 W Tested)
EFFICACY	77.10 lm/W

ENVIRONMENTAL CONDITIONS

AMBIENT TEMPERATURE (TA)	-20°C TO +50°C
HUMIDITY	RH 10–95%

PROTECTION & DURABILITY

IP RATING	IP66
IK RATING	IK09

ELECTRICAL DETAILS

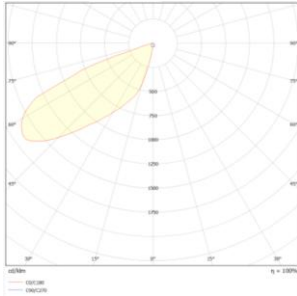
NOMINAL VOLTAGE	220–240 VAC
FREQUENCY	50/60 HZ
CURRENT RATING	500mA
POWER FACTOR	≥0.90
RATED POWER	20W
THD	≤20%
CONTROL OPTIONS	DALI, 1–10V DIMMING



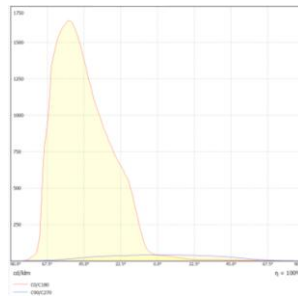


PHOTOMETRIC DETAILS

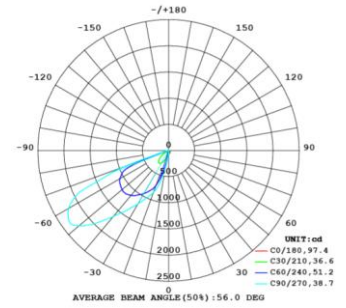
Polar Plot



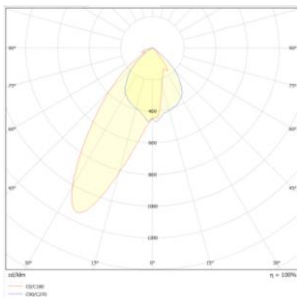
Linear Plot



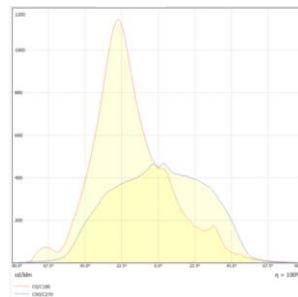
Symmetric Lens



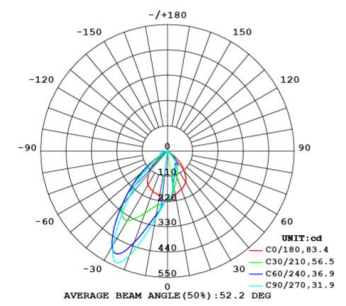
Polar Plot



Linear Plot



Asymmetric Lens





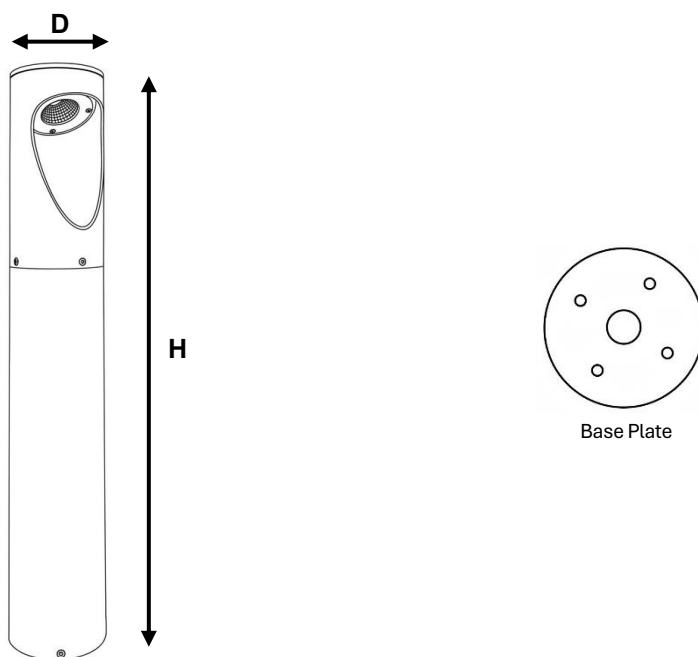
CUSTOM DIMMING PROFILE

The bollard luminaire supports 1–10 V dimming as well as DALI dimming, allowing smooth and reliable adjustment of light output according to the required ambiance or energy-saving needs. By integrating with compatible lighting control systems, the brightness can be adjusted from full output to lower levels while maintaining stable performance.

- 1–10 V dimming: Simple analog dimming.
- DALI dimming: Digital, programmable dimming for advanced control.

This feature is ideal for pathways, landscapes, and architectural outdoor applications where lighting levels may need to be adjusted at different times of the night, improving visual comfort while reducing energy consumption

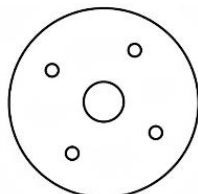
DIMENSIONAL DETAILS



DIMENSIONS	
HEIGHT	1000 mm / 650 mm / 350 mm
DIA	150 mm

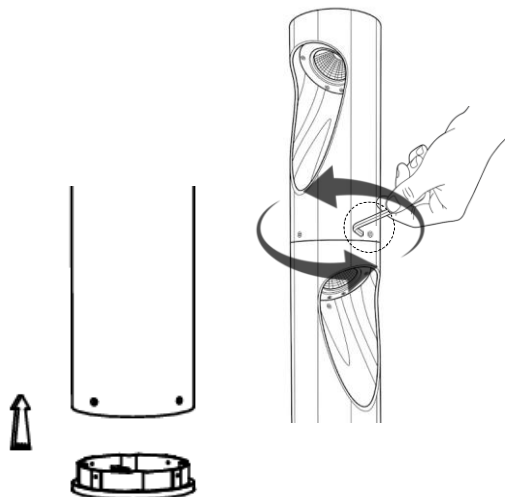


GENERIC INSTALLATION STEPS



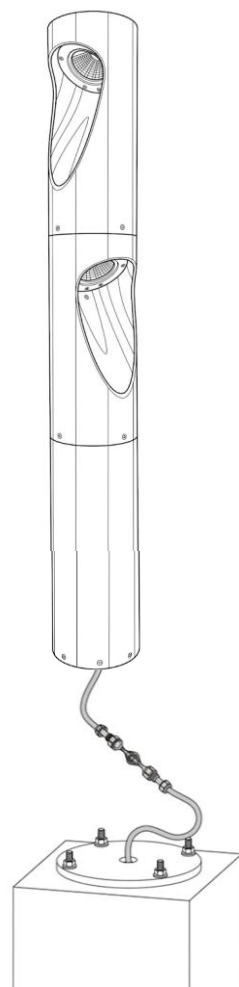
1. Base Preparation

Prepare a stable concrete base or mounting plate and route the power cable to the installation point.



2. Fixture Mounting &

Position the bollard on the base and secure it firmly using anchor bolts & For adjusting the head, Loosen the Allen key locking screws, adjust each head to the desired angle, and securely re-tighten the screws without damaging the luminaire surface.



3. Wiring & Test

Connect the power cables as per the wiring diagram and switch on the power to test the luminaire.

Note:

- Use only suitably rated IP connectors (minimum IP66 or above) for all electrical connections.
- Where remote controllers are used, they shall be installed within appropriately rated IP enclosures to ensure protection against environmental ingress.



UNDERSTANDING BOLLARD HEIGHT SELECTION



CH: 350 mm

MH: 650 mm

TH: 1000 mm

Compact Height Bollards (CH) : (350 mm)

Suitable for landscape areas, pathways, and decorative applications where subtle illumination is preferred. Featuring a lower height profile, it provides soft guidance lighting with minimal glare and enhanced visual comfort.

Medium Height Bollards (MH): (650 mm)

Ideal for balanced pathway lighting in residential and commercial outdoor spaces, With a medium-height configuration, it offers an optimal balance between visibility and visual comfort without overpowering the surroundings.

Tall Height Bollards (TH): (1000 mm)

Designed for primary pathway lighting, public spaces, and open areas where enhanced visibility and wider light distribution are required. Typically configured with a taller form factor.

Tall Height Bollards (TH): (1000 mm)

Double-head bollard is ideal for pathways, gardens, parks, and outdoor spaces. Its dual-direction illumination improves visibility and safety while enhancing the overall landscape aesthetics.