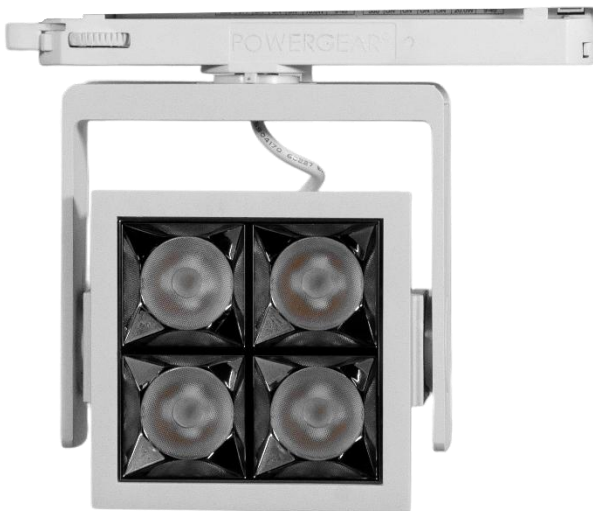




DOTLUXE SQ



 +971 65 260 706  sales-me@hansagreen.com

 Hamriyah Free Zone Sharjah, UAE.

DOTLUXE SQ 15W

LED TRACK MOUNTED LIGHT

- High Luminous efficacy - More light output.
- Focused Illumination – Precise directional lighting.
- Long life: 50,000+ hrs - Minimal maintenance.
- Easy Installation – Quick, tool-free mounting.
- Optimized Brightness – PC lens enhances light output.



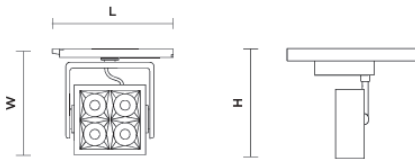
DLX-SQ-15

Technical		IK02	IP44	UGR <21	CRI >80
Light Source			SMD		-
Luminous Efficacy (subject to a tolerance of ±10%)			80		Lumen / Watt
Correlated Colour Temperature (CCT)			3000/4000/6500		Kelvin
Lifetime			50,000		Hours
McAdam Binning			3		Step
Housing					
Body			Aluminium Die Cast		
Lens / Diffuser			TIR Lens		
Reflector			-		
Mounting			Track mounting		
Thermal					
Ambient Temperature (Ta)			-20 to 45		°Celsius
Storage Temperature (Ts)			-20 to 50		°Celsius
Humidity			10 to 90		RH(%)

ELECTRICAL CHARACTERISTICS

Control Option	ON/OFF	PHASE DIMMING	1-10V	DALI
Rated Power	15		Watts	
Input Current (@ 230V)	0.06		Amps	
Input Voltage	220 to 240		VAC	
Frequency	50 to 60		Hertz	
Output Current	400		mA	
Output Voltage	9 to 40		VDC	
Power Factor	>0.95			

DIMENSIONAL DETAILS



All measurements are in mm

L/D	W	H	Cutout	Weight
93	93	170	-	0.62 kg

PHOTOMETRIC DETAILS

Beam Angle	22.2°
------------	-------

