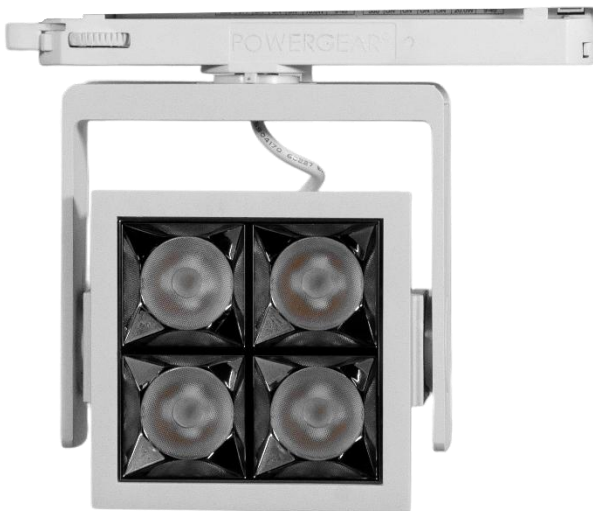




DOTLUXE SQ



 +971 65 260 706  sales-me@hansagreen.com

 Hamriyah Free Zone Sharjah, UAE.

DOTLUXE SQ 12W

LED TRACK MOUNTED LIGHT

- High Luminous efficacy - More light output.
- Focused Illumination – Precise directional lighting.
- Long life: 50,000+ hrs - Minimal maintenance.
- Easy Installation – Quick, tool-free mounting.
- Optimized Brightness – PC lens enhances light output.



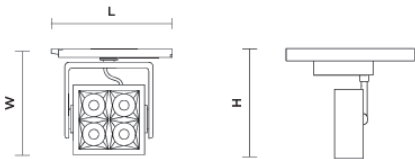
DLX-SQ-12

| Technical | | IK02 | IP44 | UGR <21 | CRI >80 |
|--|--|------|--------------------|---------|--------------|
| Light Source | | | SMD | | - |
| Luminous Efficacy (subject to a tolerance of ±10%) | | | 100 | | Lumen / Watt |
| Correlated Colour Temperature (CCT) | | | 3000/4000/6500 | | Kelvin |
| Lifetime | | | 50,000 | | Hours |
| McAdam Binning | | | 3 | | Step |
| Housing | | | | | |
| Body | | | Aluminium Die Cast | | |
| Lens / Diffuser | | | TIR Lens | | |
| Reflector | | | - | | |
| Mounting | | | Track mounting | | |
| Thermal | | | | | |
| Ambient Temperature (Ta) | | | -20 to 45 | | °Celsius |
| Storage Temperature (Ts) | | | -20 to 50 | | °Celsius |
| Humidity | | | 10 to 90 | | RH(%) |

ELECTRICAL CHARACTERISTICS

| | | | | |
|------------------------|------------|---------------|-------|------|
| Control Option | ON/OFF | PHASE DIMMING | 1-10V | DALI |
| Rated Power | 12 | | Watts | |
| Input Current (@ 230V) | 0.05 | | Amps | |
| Input Voltage | 220 to 240 | | VAC | |
| Frequency | 50 to 60 | | Hertz | |
| Output Current | 300 | | mA | |
| Output Voltage | 9 to 40 | | VDC | |
| Power Factor | >0.95 | | | |

DIMENSIONAL DETAILS



All measurements are in mm

| L/D | W | H | Cutout | Weight |
|-----|----|-----|--------|---------|
| 93 | 93 | 170 | - | 0.62 kg |

PHOTOMETRIC DETAILS

| | |
|------------|-------|
| Beam Angle | 22.2° |
|------------|-------|

