

ADQCC Approved

Pelican Series

Led street lights




Hansagreen
LED

Powered with **CREE** 



Hansagreen
LED

IoT Based Smart Street Lights

Pelican D



Pelican T



Street Lights

Internet
Smart
Street Lights
Internet



Pelican D

IOT Compatible

Available Powers

- 60W
- 80W
- 100W
- 120W
- 150W
- 180W
- 200W
- 240W
- 250W
- 300W

130-150 lms/W



It is one of the Fast moving, Elegant and compact designed street light from the pelican series. The most ultimate feature of Pelican series is the adaptability towards the IoT Technology. Utilising most adorable technologies along with our products is always fascinating.

Adjustable Arm



High Pressure Die Cast Aluminium



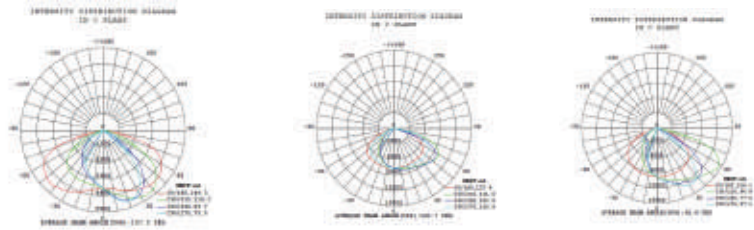
Thermal dissipating design features



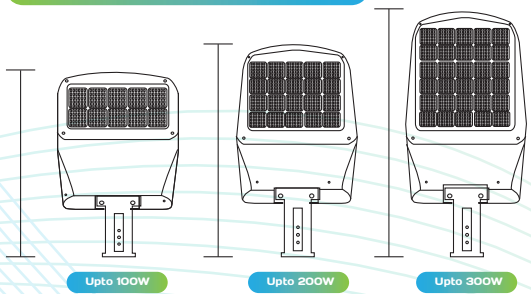
Available in 3 different sizes



Eulumdat Beam Diagrams



Wire Diagram



Dimming Options

1. 0-10/1-10 V Dimming
2. Motion Dimming

Key Features

LED CHARACTERISTICS

Led Source	: Cree
CRI	: >80
Beam Angle	: 150*80 degrees
Rated Luminous efficacy	: 130-160 lm/W

ELECTRICAL DETAILS

Power supply	: MeanWell/Inventronics
Dimming	: Possible
Input Voltage	: AC 100-240V
Input frequency	: 50/60 Hz
Power Factor	: 0.9
Efficiency	: 90%
THD	: 15%

HOUSING AND CHARACTERISTICS

Housing Material	: High Pressure Die cast alluminium
Lens	: Poly carbonate convex lens
Cover	: Tempered Glass cover

ENVIRONMENT CAPABILITIES

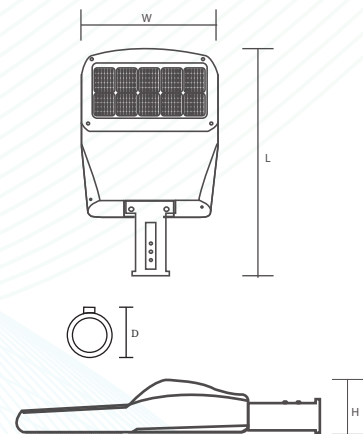
Ambient Temperature	: -20 to 55 deg C
Storage Temperature	: -40 to 60 deg C
Humidity	: RH 10% - 90%
IP Rating	: IP66



IP66

IK10

Dimensional Details



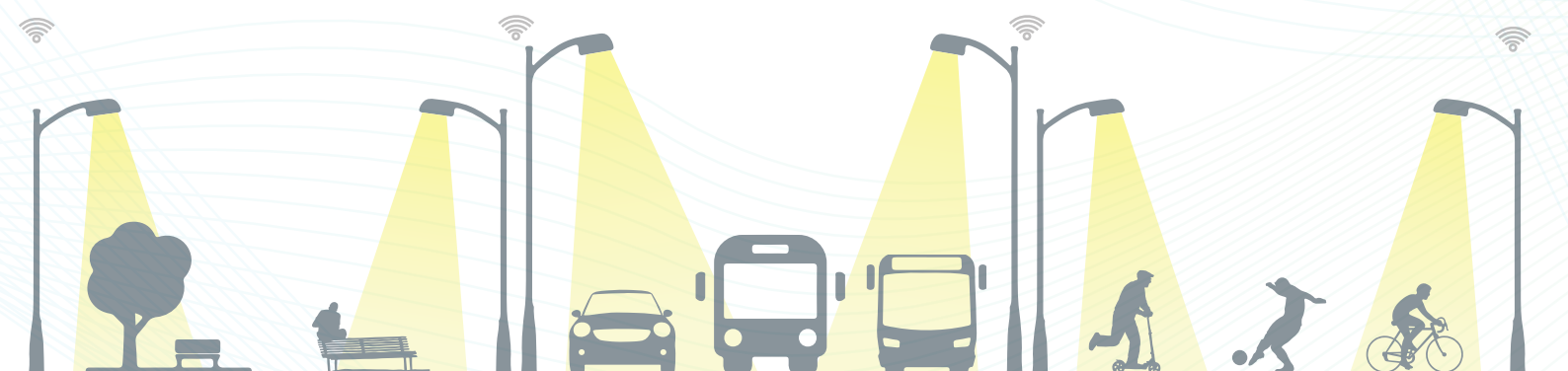
Product Power	Dimension	Pole Diameter
Upto 100W	L:583,W: 345,H:109 mm	D:60 mm
Upto 200W	L:687,W: 349,H:109 mm	D:60 mm
Upto 300W	L:789,W: 349,H:112 mm	D:60 mm

Main Bodies	Powers that can be incorporated
100W	60W, 80W and 100W
200W	100W, 120W, 150W, 180W and 200W
300W	220W, 250W and 300W

Parks, Beach area, Recreational sites.

Streets, Highways, Broadways

Play Area, Ring Roads, Cycle Tracks



Pelican T

IOT Compatible

Available Powers

- 60W
- 80W
- 100W
- 120W
- 150W
- 180W
- 200W
- 220W
- 240W

130-150 lms

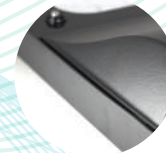
It is one of the fast moving, Elegant and compact designed street light from the pelican series. The most ultimate feature of Pelican series is the adaptability towards the IoT Technology. Utilising most adorable technologies along with our products is always fascinating.



Adjustable Arm



High pressure Die cast Aluminium



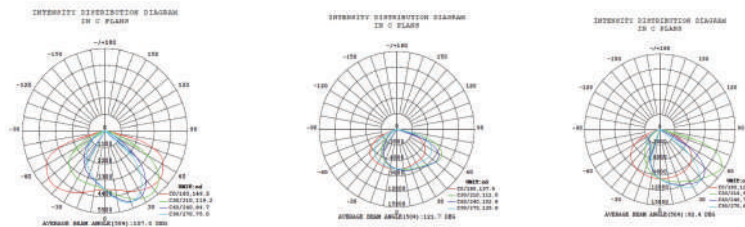
Toolless maintenance



Available in 3 different sizes



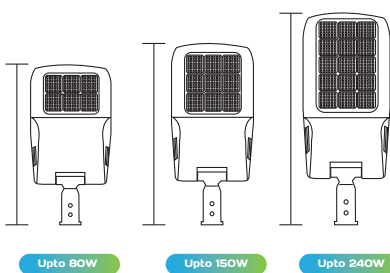
Eulumdat Beam Diagrams



Toolless maintenance



Wire Diagram



Dimming Options

1. 0-10/1-10 V Dimming
2. Motion Dimming

Key Features



LED CHARACTERISTICS

Led Source : Cree
 CRI : >80
 Beam Angle : 140*70 degrees
 Rated Luminous efficacy : 130-160 lm/W

ELECTRICAL DETAILS

Power supply : MeanWell/Inventronics
 Dimming : Possible
 Input Voltage : AC 100-240V
 Input frequency : 50/60 Hz
 Power Factor : 0.9
 Efficiency : 90%
 THD : 15%

HOUSING AND CHARACTERISTICS

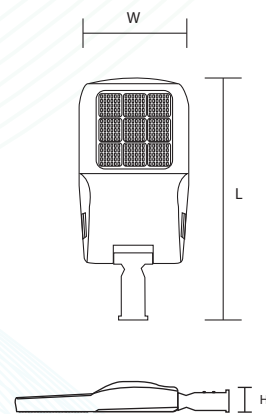
Housing Material : High Pressure Die cast aluminium
 Lens : Poly carbonate convex lens
 Cover : Tempered Glass cover

ENVIRONMENT CAPABILITIES

Ambient Temperature : -20 to 55 deg C
 Storage Temperature : -40 to 60 deg C
 Humidity : RH 10%- 90%
 IP Rating : IP66



Dimensional Details



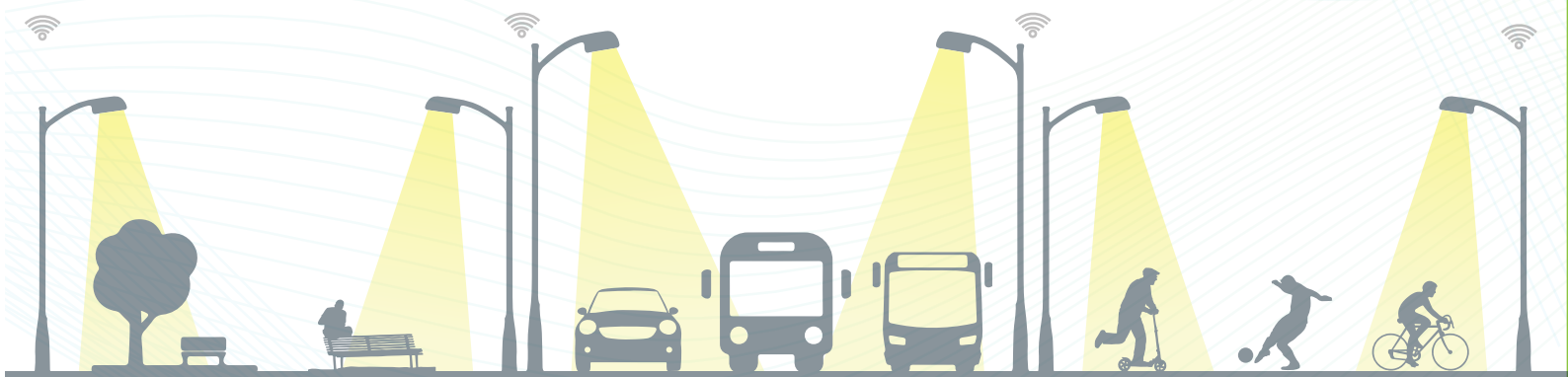
Product Power	Dimension	Pole Diameter
Upto 80W	L:527,W: 233,H:103 mm	D:60 mm
Upto 150W	L:627,W: 271,H:103 mm	D:60 mm
Upto 240W	L:768,W: 301,H:104mm	D:60 mm

Main Bodies	Powers that can be incorporated
80W	60W and 80W
150W	100W ,120W and 150W
240W	180W ,220W and 240W

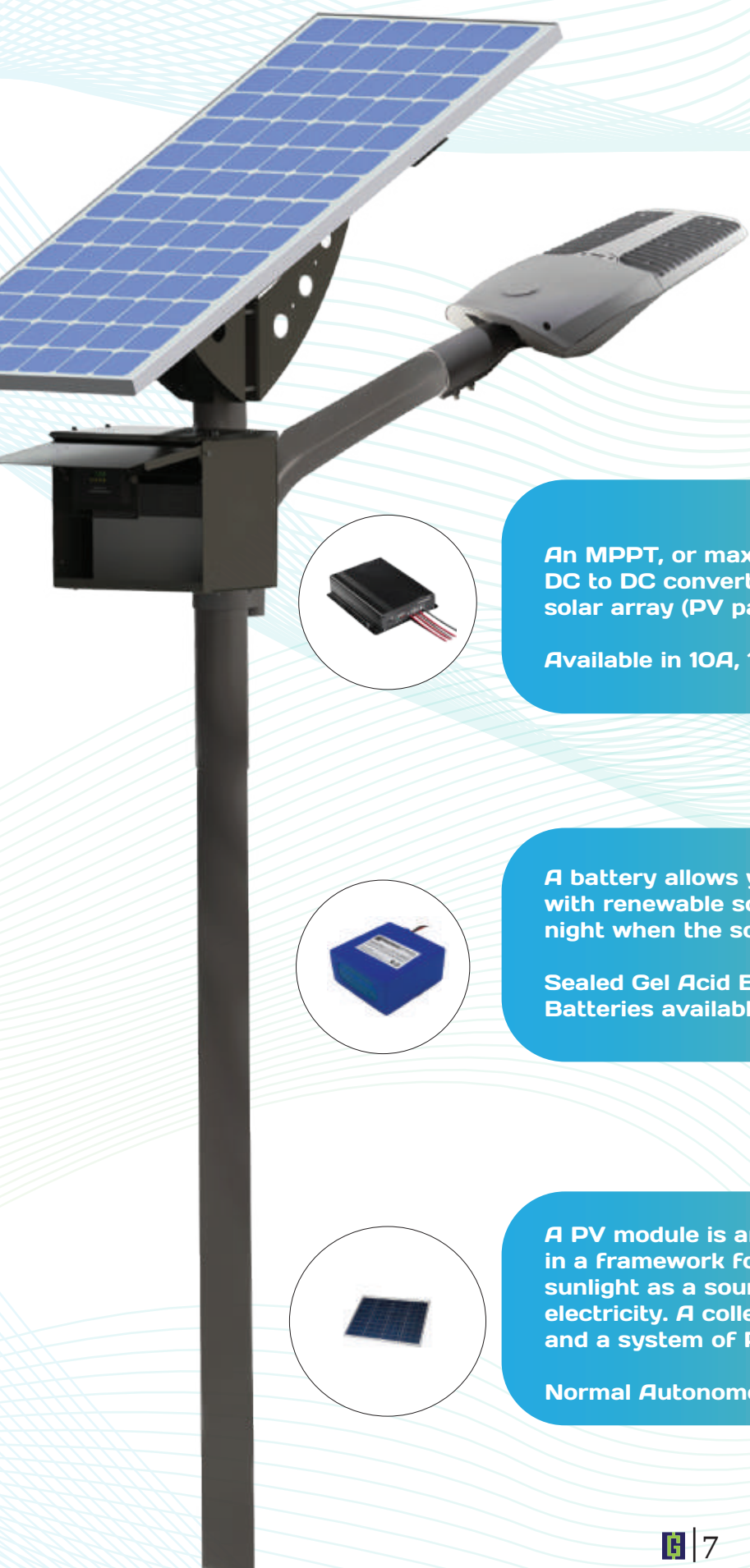
Parks, Beach area, Recreational sites.

Streets, Highways, Broadways

Play Area, Ring Roads, Cycle Tracks



Pelican as Solar Street Light



Solar Compatible Models



Pelican D



Pelican T

Available in all Product powers

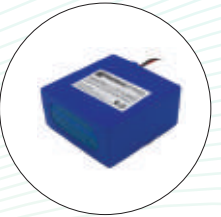
MPPT Charge Controller



An MPPT, or maximum power point tracker is an electronic DC to DC converter that optimizes the match between the solar array (PV panels), and the battery bank or utility grid.

Available in 10A, 15A, and 20A

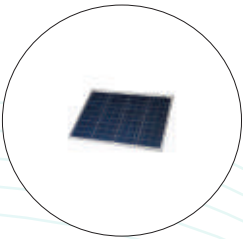
Power Storage Unit



A battery allows you to continue powering your light with renewable solar energy during the evening and at night when the solar panels aren't able to generate energy.

Sealed Gel Acid Battery, Lithium Ion and also LiFePO4 Batteries available

Solar Panel



A PV module is an assembly of photo-voltaic cells mounted in a framework for installation. Photo-voltaic cells use sunlight as a source of energy and generate direct current electricity. A collection of PV modules is called a PV Panel, and a system of Panels is an Array

Normal Autonomous for 2 Days

1

ADQCC Approved

Abu Dhabi Quality and Conformity Council
-A Quality certification council under the
Government of Abu Dhabi.

2

CB Certified

A Conformity Assessment schemes
For Electrotechnical Equipment and
Components based on IEC/CEC

3

LVD and EMC Certified

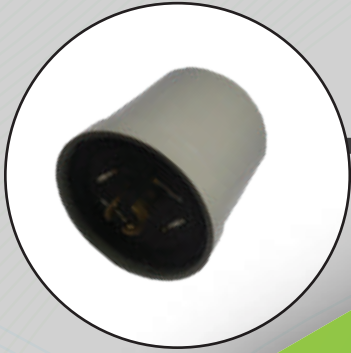
Low Voltage Directive and
Electro-Magnetic Compatibility
Compliances.

4

LM79, LM82, Vibration Test Reports

5

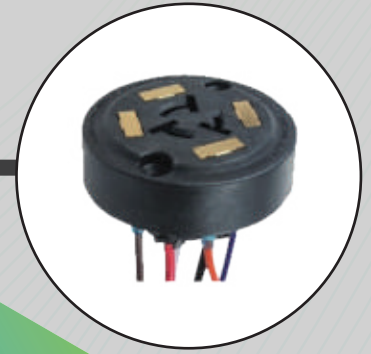
IP, IK, Sand-Dust, TM21 and RoHS Certified



1

Node Controller

It is the end controller mounted on the top of the street light with the help of Nema Socket. And all communication traffic between the lamp and DCU through this device



2

NEMA Socket

It provides an Electrical and Mechanical connection between the control cell and the LED Lamp. Standard Nema Socket comes in 3, 5 or in 7 Pins

3

Data Controller Unit

It Collect all data about energy usages and other customer managements info from the node controller connected via wireless communication



4

Controlling Software

The entire street light system can be controlled using the web based software. All the user logs and data will be stored in cloud storage and is protected with Military level Encryption algorithms





**Energy Efficient
and Cost Effective**

Convert your Normal LED Street light to a smart one with the handy Nema Socket and Controller plugged in.

Say Good Bye to unknown or surprised Street lamp failures. Make them to report your log when ever they go offline

**Works on LoRA
or Zigbee Network**

Realtime monitoring and scheduling of street lights with the help of ambient light sensing technology

**Remote dimming
and Automatic
Fault detecting
and reporting**

Program the entire streets for the convenient timing and results in massive reduction in Energy Consumption and cost effects.